



# Casco Bay Monitoring Network: DEP eelgrass monitoring update

Angela Brewer  
Section Leader, Marine Unit  
Division of Environmental Assessment  
Bureau of Water Quality

MAINE DEPARTMENT OF ENVIRONMENTAL PROTECTION

*Protecting Maine's Air, Land, and Water*

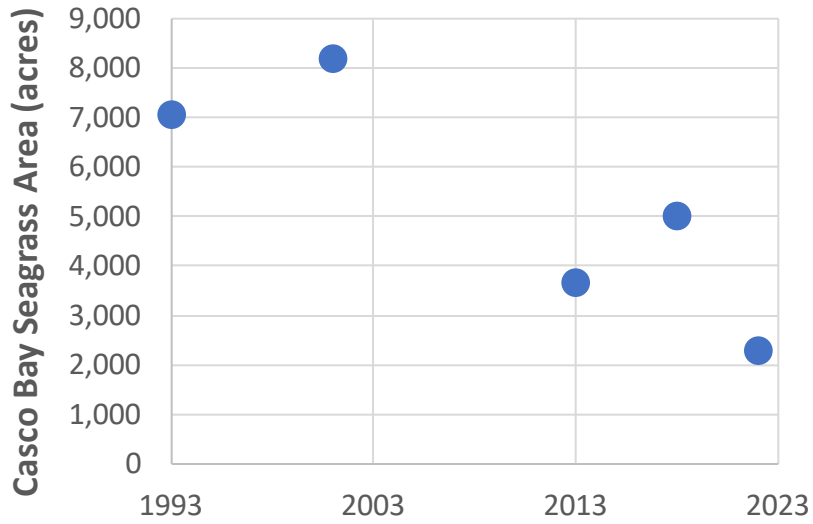


Figure credit: Casco Bay Estuary Partnership

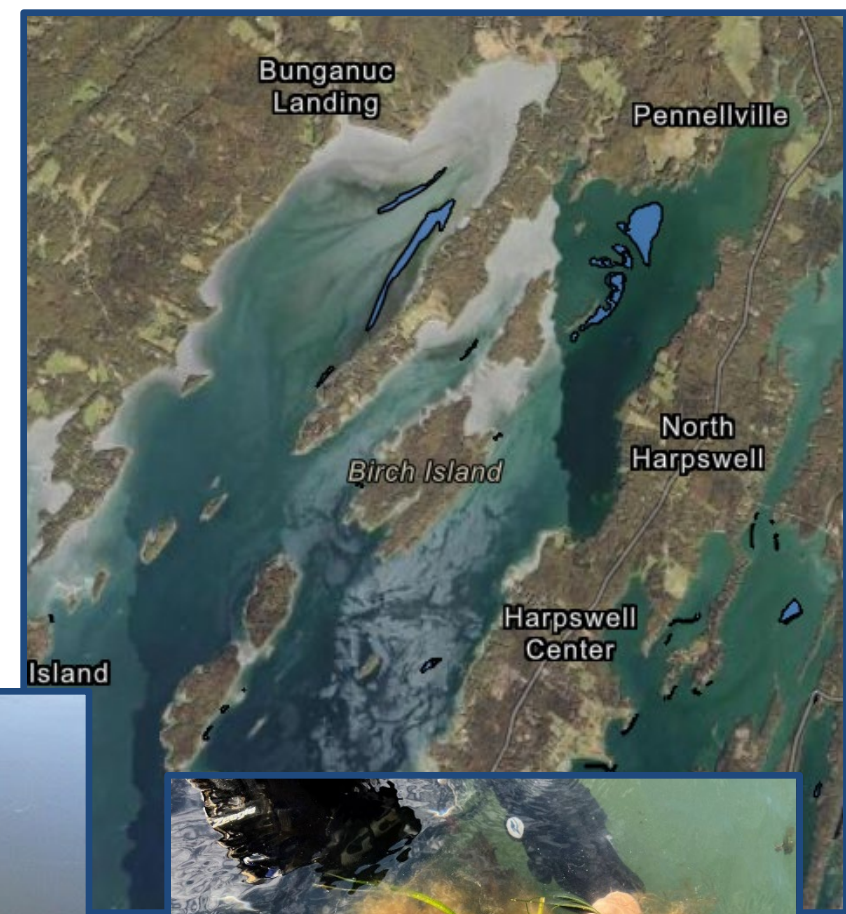
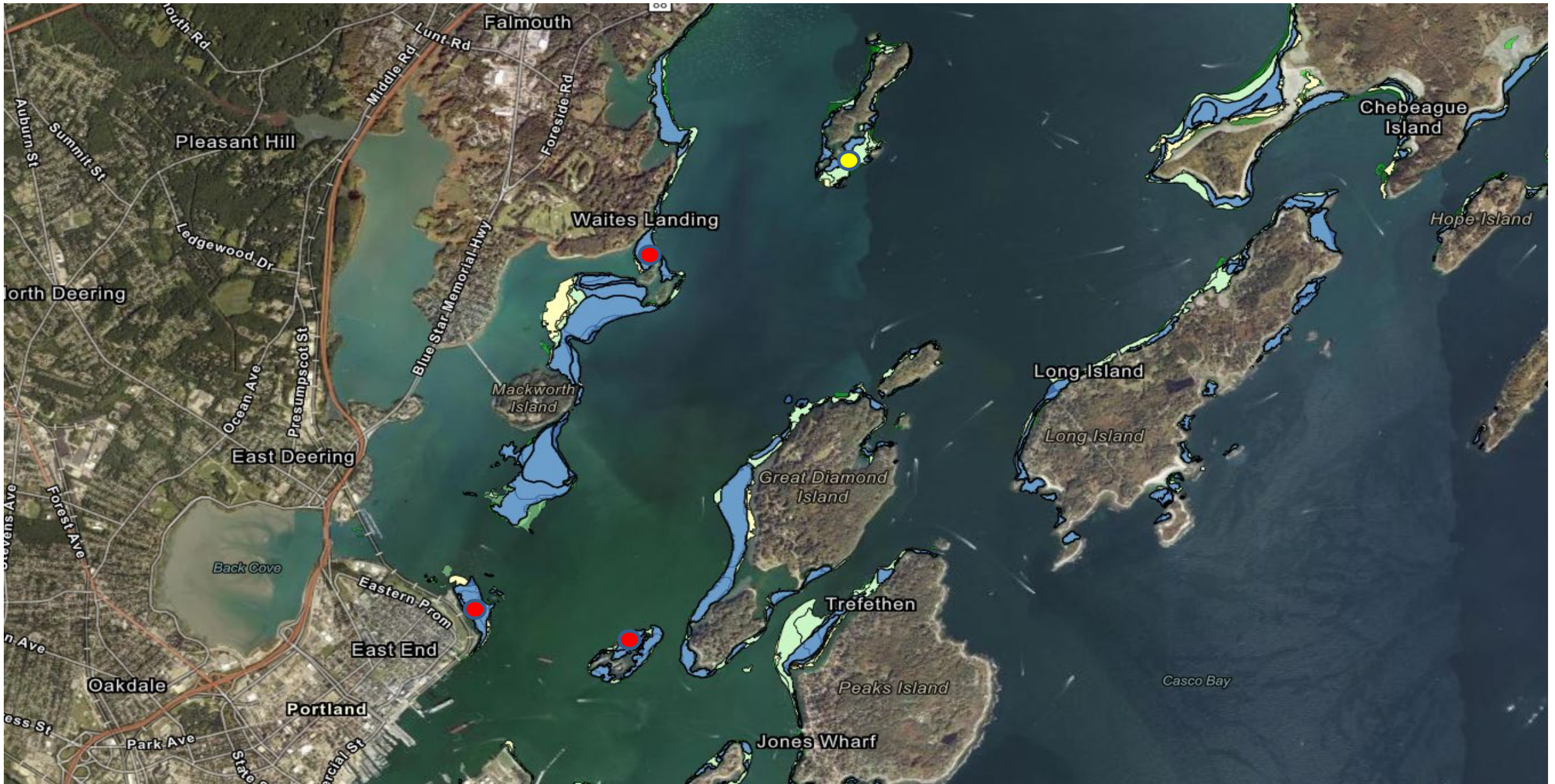


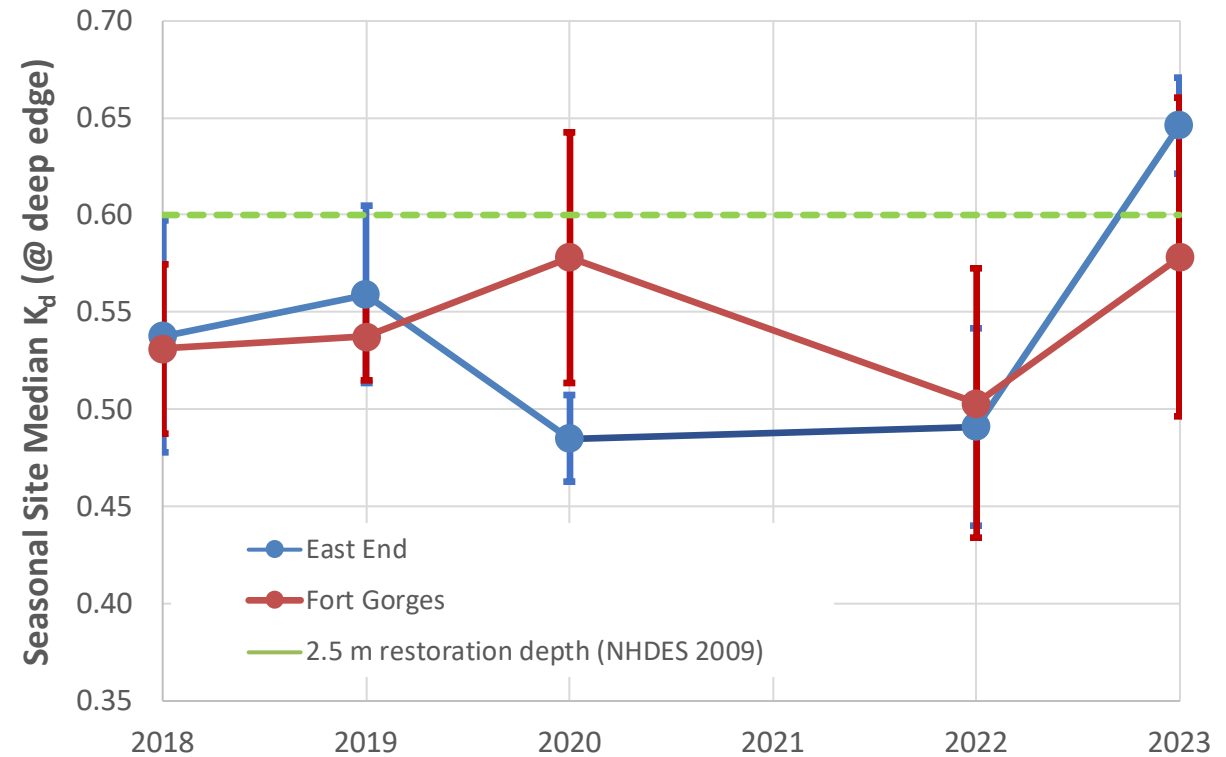
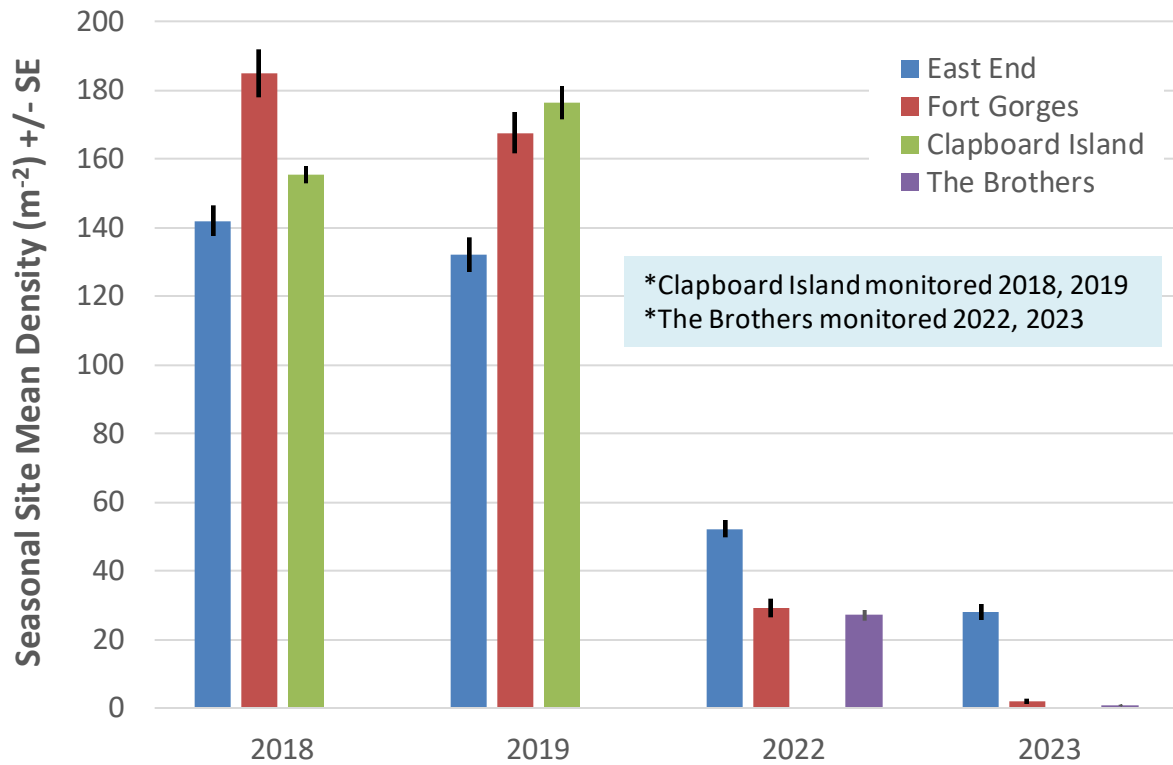
Photo credit: Brunswick PD, July 2022



Photo credit: Stantec, August 2022







- Density (& percent cover & canopy height) decline along transects
- No flowering shoots in any quadrats during June monitoring
- Eelgrass patchy w/in beds off transects, most abundant along video transect at East End
- $K_d$  highly influenced by tide stage, generally conducive to eelgrass growth
- Continuous light & temperature monitoring stymied by lobster gear spatial conflicts





June 2018

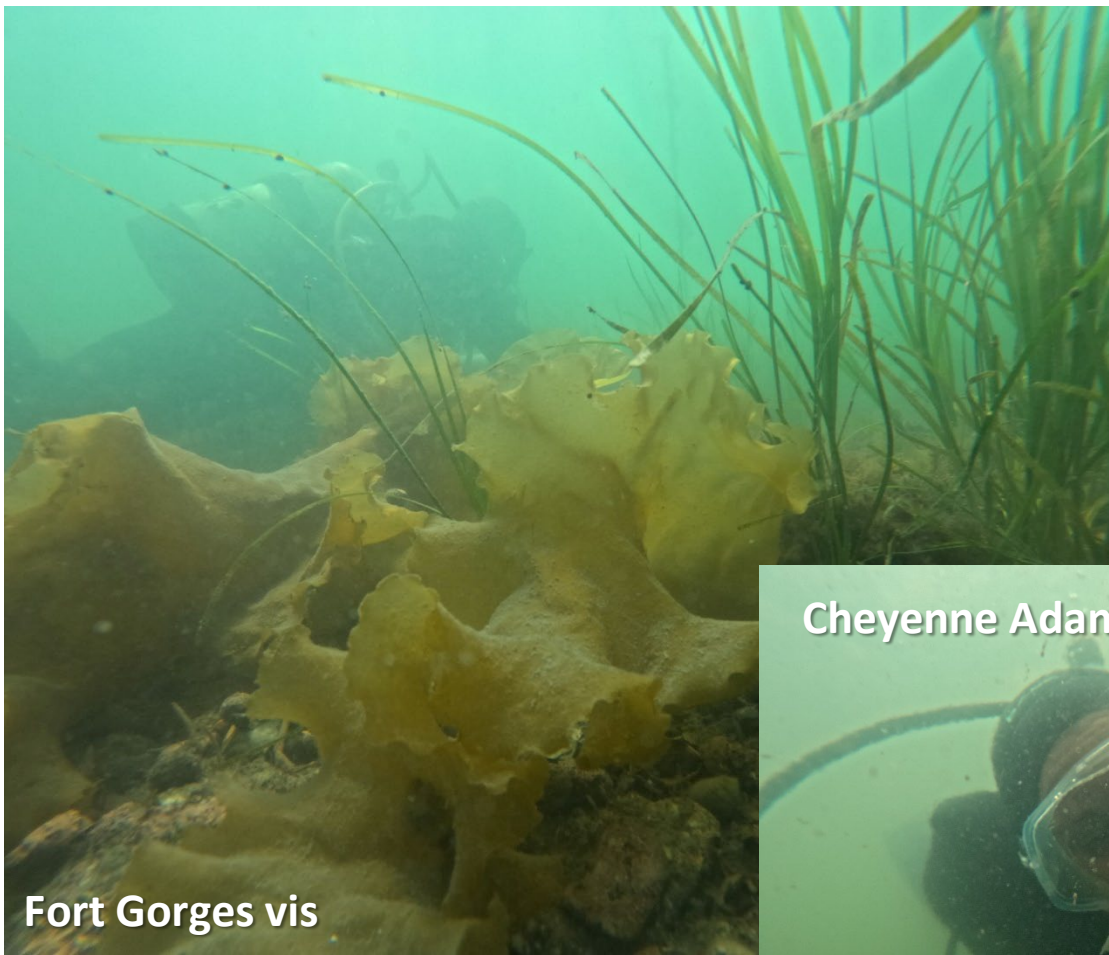


June 2023



June 2022





Fort Gorges vis



The Brothers view



Cheyenne Adams





Contact:

Angela Brewer, 207-592-2352

[angela.d.brewer@maine.gov](mailto:angela.d.brewer@maine.gov)

<https://www.maine.gov/dep/water/monitoring/coastal/index.html>

*[www.maine.gov/dep](http://www.maine.gov/dep)*

